

EUROPEAN COMMISSION  
Regional Policy

**Maritime Safety in  
European Territorial Co-operation  
programmes  
2007-2013**

Viktoría Varga Lencses  
European Commission  
DG Regional Policy

European  
Territorial  
Cooperation

EUROPEAN COMMISSION  
Regional Policy

- State of play
- Project requirements
- Complementarity and synergy with other programmes

2

EUROPEAN COMMISSION  
Regional Policy

**European Territorial  
Co-operation**

- Cross-border (A): 53+12 programmes bilateral, trilateral, quadrilateral
- Transnational (B): 13 programmes
- Interregional (C): Interreg IVC, Interact, Urbact, Espon

3

EUROPEAN COMMISSION  
Regional Policy

**Transnational co-operation**

- 13 programmes - geographical areas for cooperation
- 8 with maritime character  
*Baltic Sea, North Sea region, North West Europe, Northern Periphery, MED, Atlantic, South West Europe, South East Europe*
- Strategic and well planned projects, involving both regional and national authorities!
- Clear added value for the transnational area

4

EUROPEAN COMMISSION  
Regional Policy

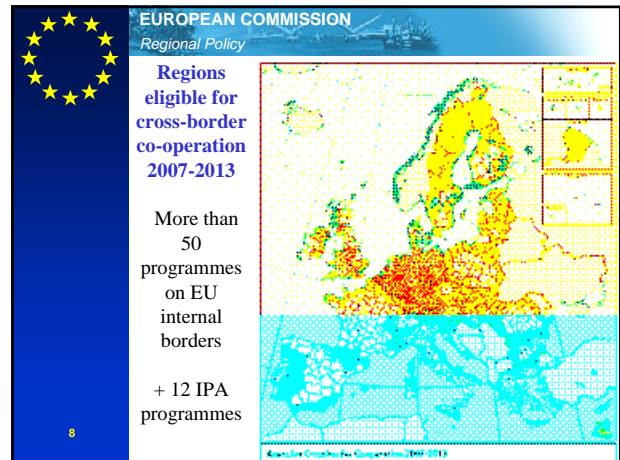
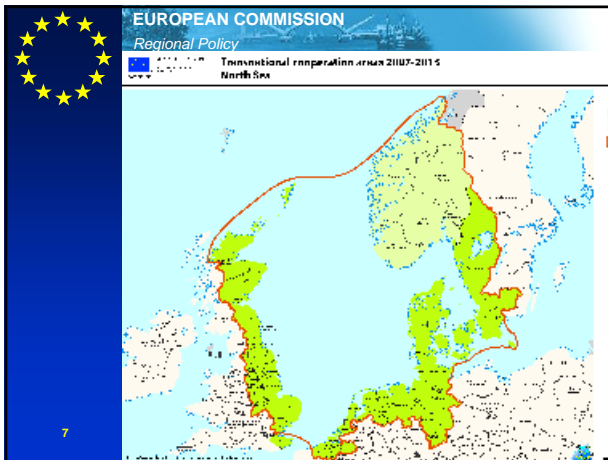
**Transnational programmes 2007- 2013**

5

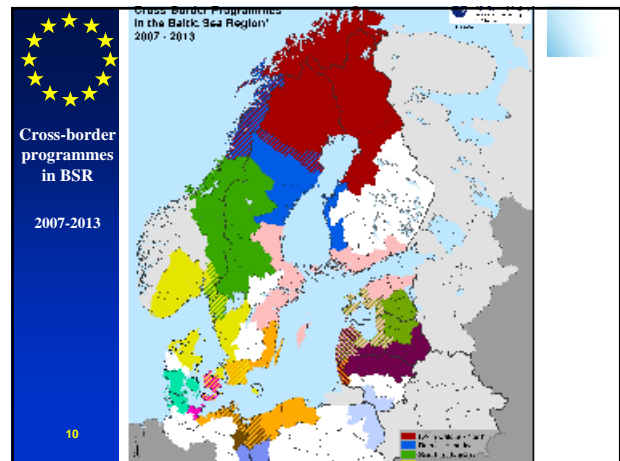
EUROPEAN COMMISSION  
Regional Policy

**Transnational cooperation areas 2007-2013  
Baltic Sea**

6



- EUROPEAN COMMISSION  
Regional Policy
- ### Cross-border co-operation
- Maritime borders are eligible (150km)
  - Three main type of maritime cross border programmes
    - Extended eligible area brings maritime character (Italy/France)
    - Maritime focus across maritime borders (Central Baltic)
    - Land focus across maritime borders (North)
  - More multi-lateral programmes
- 9



EUROPEAN COMMISSION  
Regional Policy

### Complementarities

Cross border cooperation }  
Transnational cooperation } •Geographical overlap in some cases  
•Type of actions should be different

+ Interregional cooperation: Good tool for exchange of experience

• Other national Structural Funds programmes }  
• Other community funded programmes (DG TREN) } Coordination at programming phase

11

- EUROPEAN COMMISSION  
Regional Policy
- ### Programme management structures: well working and cost-effective
- Managing Authority (MA)**
- Good management capacity
- Joint Technical Secretariat (JTS)**
- Support the MA (and PMC) effectively and therefore normally located nearby
  - Provide help and support to projects at all stages
  - Process applications and organise expert assessments
- Monitoring Committee**
- Normally also responsible for project selection
- 12



EUROPEAN COMMISSION  
Regional Policy

### Programme structures to support true co-operation projects of high quality

Cross-border and transnational co-operation:

- Partners from at least **two countries**
- Fulfill **at least 2 of the following 4 co-operation criteria**:
  - joint project development
  - joint implementation
  - joint project staff
  - joint financing

13



EUROPEAN COMMISSION  
Regional Policy


### Programme structures to support true co-operation projects of high quality

Interregional co-operation:

- Partners from at least:
  - **three Member States**
  - Three countries, of which at least two member States, where a beneficiary from a third country is involved.

The beneficiaries shall cooperate in each operation through **joint development, joint implementation, joint staffing and joint financing.**

14



EUROPEAN COMMISSION  
Regional Policy

### After formal submission...

- Admissibility
- Consultation within DG Regio and with other Commission services
- Negotiations
- Decision procedure
- Adoption of the programme
- Implementation

} Preparation of call for projects

15



EUROPEAN COMMISSION  
Regional Policy

Thank you for your attention!

[http://ec.europa.eu/regional\\_policy/index\\_en.htm](http://ec.europa.eu/regional_policy/index_en.htm)

16